

Koyo

High-performance Product Series for Steelmaking and Rolling Equipment



JTEKT
JTEKT CORPORATION

Industry throughout the world is required to reduce energy consumption, save labor, improve efficiency and be environmentally friendly. To satisfy such needs, new products are being made available.

Founded on years of experience and know-how, JTEKT steel making and rolling equipment products are perfect for such needs.

In steel making and rolling applications, Koyo's advanced, high-performance bearing products are highly recommended, along with other Koyo products.



RHR Type Spherical Roller Bearings

The Spherical Roller Bearing Series features increased load ratings thanks to optimized design. The surface of contact between the rollers and inner and outer rings is optimally shaped to realize ideal pressure distribution across the surface, thus ensuring excellent shock-load resistance and improved durability and reliability.



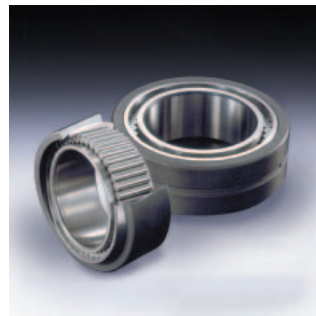
SOLPACK Bearings

SOLPACK Bearings have a polymeric lubricant enclosed in the internal space. Possessing excellent oil retention characteristics, these bearings enable extended maintenance intervals, keeping the equipment free from oil smears, and thus realizing a clean work environment. The SOLPACK Bearing technology is applicable to deep groove ball bearings, cylindrical roller bearings and spherical roller bearings.



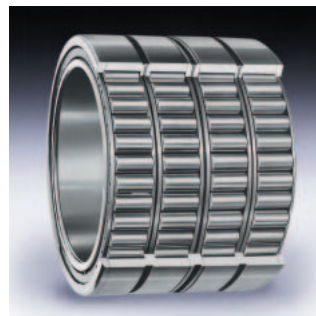
HSC Bearing Units

HSC Bearing Units support the driving rolls of continuous casting machines. Provided with a full complement type cylindrical roller bearing, these units ensure improved reliability in load-carrying performance. The specially designed two-split housing has self-aligning capability and copes with the expansion and contraction of the roll.



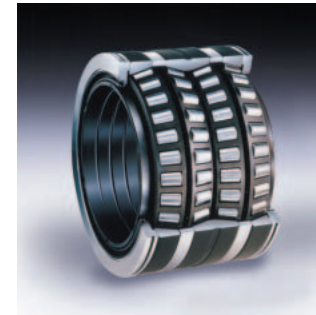
SC Bearings

SC Bearings are designed to support the guide rolls of continuous casting machines. Provided with a full complement type cylindrical roller bearing, these units ensure improved reliability in load-carrying performance. The bearing is coupled with an aligning ring, providing self-aligning capability and enabling smooth axial movement.



Four Row Cylindrical Roller Bearings

These large size Four Row Cylindrical Roller Bearings support the backup roll of rolling mills. Optimized for rolling mills, these bearings are suitable for high-load, high-speed applications. Compared with oil-film bearings, these bearings have improved stable running accuracy, enhancing product accuracy.



Sealed Type Four Row Tapered Roller Bearings

Sealed Type Four Row Tapered Roller Bearings are designed for the work rolls and intermediate roll necks of rolling mills. Thanks to a compact seal, these bearings feature increased load ratings. The modified seal between the double cones has superseded the cone spacer, enabling easier handling.



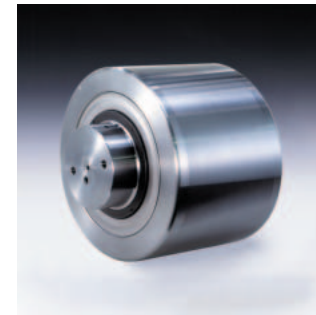
Cylindrical Roller Bearings for Backing Shafts

These Cylindrical Roller Bearings are designed for the backing shafts of multi-roll mills. Because they support loads while maintaining contact with the intermediate roll, the outer ring is made of special material and is heat-treated for surface hardness to ensure impact resistance, and thus reliability.



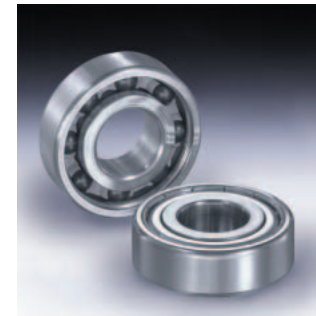
Sealed Type Double Row Tapered Roller Bearings

Sealed Type Double Row Tapered Roller Bearings are designed to support axial loads on the roll necks of rolling mills. The side plate on the outer ring is provided with preload springs and bearing seal to prevent grease leakage and ingress of contaminants, enabling extended maintenance intervals.



Backup Roll Units

Backup Roll Units are for use on plate levelers and tension levelers. Units can be custom-made using optimal roll material and seal structure according to service conditions and requirements. The Backup Roll Units are completely sealed, realizing a clean work environment.



Hybrid Ceramic Ball Bearings

Hybrid Ceramic Ball Bearings are deep groove ball bearings with ceramic balls. They feature excellent high-speed performance and seizure resistance. These bearings help improve the reliability of equipment that feature high-speed rotation. They are typically suitable to support the guide rollers of wire/rod mills.



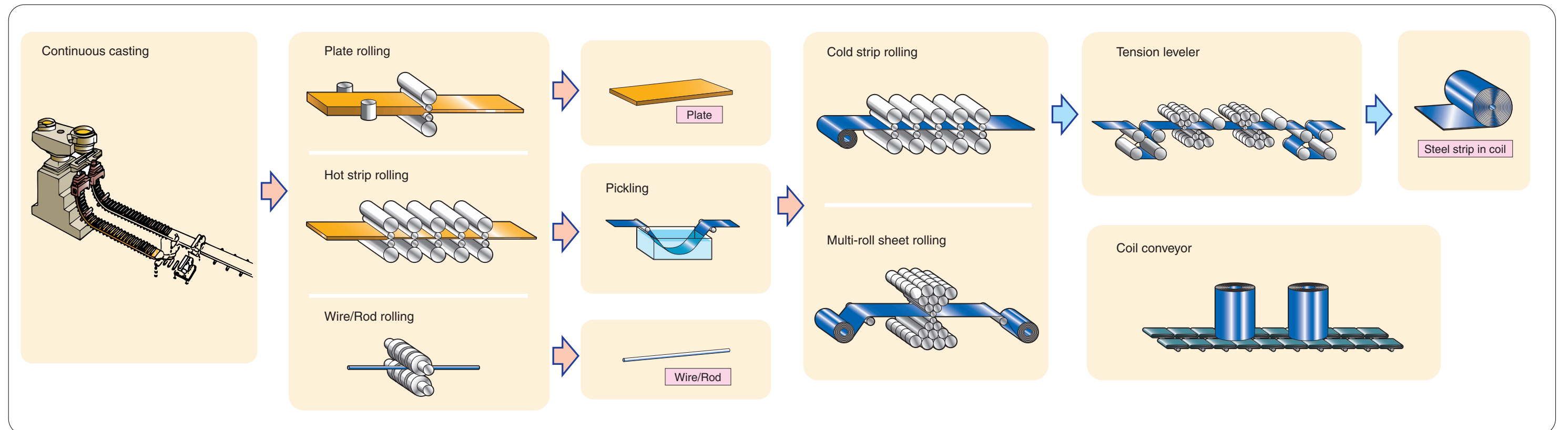
Drive Shafts

These drive shafts are optimized for high-load applications such as mill rolls. Incorporating many new technologies and mechanisms, these shafts feature improved service life, strength and corrosion resistance.

■ Koyo High-performance Products and Application Equipment

Product Name Equipment	RHR Type Spherical Roller Bearings	SOLPACK Bearings	HSC Bearing Units	SC Bearings	Four Row Cylindrical Roller Bearings For roll necks	Sealed Type Four Row Tapered Roller Bearings For roll necks	Cylindrical Roller Bearings for Backing Shafts For multi-roll mills	Sealed Type Two Row Tapered Roller Bearings For roll necks	Backup Roll Units	Hybrid Ceramic Ball Bearings	Drive Shafts
Continuous casting machines	●		●	●							●
Plate mills					●	●		●			●
Hot strip mills					●	●		●			●
Cold strip mills					●	●		●			●
Multi-roll mills							●				●
Levelers									●		●
Skin pass mills						●		●			●
Wire/Rod mills						●				●	●
Surface treatment equipment		●									●
Transfer equipment	●	●		●							●

■ Typical Steel Production Line



GLOBAL NETWORK

BEARING BUSINESS OPERATIONS

JTEKT CORPORATION NAGOYA HEAD OFFICE

No.1-1, Asahimachi, Kariya, Aichi 448-8652, JAPAN
(move to Midland Square at Meieki 4-chome, Nakamura-ku, Nagoya, is planned for Dec. 2006)
TEL : 81-566-25-5111
FAX : 81-566-25-5470

JTEKT CORPORATION OSAKA HEAD OFFICE

Sales & Marketing Headquarters

No.5-8, Minamisemba 3-chome, Chuo-ku, Osaka 542-8502, JAPAN
TEL : 81-6-6245-6087
FAX : 81-6-6244-9007

OFFICES

KOYO CANADA INC.

5324 South Service Road, Burlington, Ontario L7L 5H5, CANADA
TEL : 1-905-681-1121
FAX : 1-905-681-1392

KOYO CORPORATION OF U.S.A.

-Cleveland Office-

29570 Clemens Road, P.O.Box 45028 Westlake, OH 44145, U.S.A.
TEL : 1-440-835-1000
FAX : 1-440-835-9347

-Detroit Office-

47771 Halyard Drive, Plymouth, MI 48170, U.S.A.
TEL : 1-734-454-1500
FAX : 1-734-454-4076

KOYO MÉXICANA, S.A. DE C.V.

Rio Nazas No.171, 3er piso, Col. Cuauhtemoc, México, D.F. C.P. 06500, MÉXICO
TEL : 52-55-5207-3860
FAX : 52-55-5207-3873

KOYO LATIN AMERICA, S.A.

Edificio Banco del Pacifico Planta Baja, Calle Aquilino de la Guardia y Calle 52, Panama, REPUBLICA DE PANAMA
TEL : 507-208-5900
FAX : 507-264-2782/507-269-7578

KOYO ROLAMENTOS DO BRASIL LTDA.

Rua Desembargador Eliseu Ghilherme 304,7-Ander,Paraiso CEP 04004-30, BRASIL
TEL : 55-11-3887-9173
FAX : 55-11-3887-3039

JTEKT (THAILAND) Co., LTD.

172 Moo 12 Tambol Bangwua, Amphur Bangpakong, Chachoengsao 24180, THAILAND
TEL : 66-38-533-310-7
FAX : 66-38-532-776

KOYO SINGAPORE BEARING (PTE.) LTD.

#09-01, C&P Logistics Hub2,27,Penjuru Lane, SINGAPORE, 609195
TEL : 65-6274-2200
FAX : 65-6862-1623

-India Branch-

1104, GD-ITL Tower, B-08, NETAJI SUBHASH PLACE, PITAM PURA, DELHI 110034 INDIA
TEL : 91-11-2735-3502/04
91-11-5537-4803/04
FAX : 91-11-2715-3501

PHILIPPINE KOYO BEARING CORPORATION

Rm.504, Comfoods Bldg., Cor. Gil Puyat Ave. and Pasong Tamo, Makati City, PHILIPPINES
TEL : 63-2-817-8881/8901
FAX : 63-2-867-3148

JTEKT KOREA CO., LTD.

Inwoo Building 6F, 539-11, Shinsa-Dong, Kangnam-Ku, Seoul, KOREA
TEL : 82-2-549-7922
FAX : 82-2-549-7923

JTEKT CORPORATION BEIJING LIAISON OFFICE

Room 1108 Tower-B Winterless-Center, No.1 Xidawang-Road, Chaoyang-District, Beijing, CHINA
TEL : 86-10-6538-8070
FAX : 86-10-6538-8077

KOYO (SHANGHAI) CO., LTD.

Rm.1905, Aetna Tower, 107 Zunyi Road, Shanghai 200051, CHINA
TEL : 86-21-6237-5280
FAX : 86-21-6237-5277

JTEKT CORPORATION SHANGHAI LIAISON OFFICE

Rm.1907, Aetna Tower, 107 Zunyi Road, Shanghai 200051, CHINA
TEL : 86-21-6237-5280
FAX : 86-21-6237-5277

KOYO AUSTRALIA PTY. LTD.

Unit 7, 175-179 James Ruse Drive, Rosehill, N.S.W. 2142, AUSTRALIA
TEL : 61-2-9638-2355
FAX : 61-2-9638-3368

JTEKT CORPORATION EUROPEAN BEARING CENTRAL OFFICE

Markerkant 13-01, 1314 AN Almere, THE NETHERLANDS
TEL : 31-36-5383333
FAX : 31-36-5347212

KOYO KULLAGER SCANDINAVIA A.B.

Johanneslundsvagen 4 194 61 Upplands Väsby, SWEDEN
TEL : 46-8-594-212-10
FAX : 46-8-594-212-29

KOYO (U.K.) LTD.

Whitehall Avenue, Kingston, Milton Keynes MK10 OAX, UNITED KINGDOM
TEL : 44-1908-289300
FAX : 44-1908-289333

EUROPA-KOYO B.V.

Lekdijk 187, 2967 GJ Langerak, THE NETHERLANDS
TEL : 31-184-606800
FAX : 31-184-602572/606857

KOYO ROMANIA REPRESENTATIVE OFFICE

Str. Frederic Jolliot-Curie, Nr.3, Etaj 1, Ap.2, Sector 5 Bucharest, ROMANIA
TEL : 40-21-410-4170/4182/0984
FAX : 40-21-410-1178

KOYO DEUTSCHLAND GMBH.

Bargkoppelweg 4, D-22145 Hamburg, GERMANY
TEL : 49-40-67-9090-0
FAX : 49-40-67-9203-0

KOYO FRANCE S.A.

8 Rue Guy Moquet, B.P.189 Z.I., 95105 Argenteuil Cedex, FRANCE
TEL : 33-1-3998-4202
FAX : 33-1-3998-4244/4249

KOYO IBERICA, S.L.

Avda.da la Industria, 52-2 izda 28820 Coslada Madrid, SPAIN
TEL : 34-91-329-0818
FAX : 34-91-747-1194

KOYO ITALIA S.R.L.

Via Bronzino 9, 20133 Milano, ITALY
TEL : 39-02-2951-0844
FAX : 39-02-2951-0954

The contents of this catalog are subject to change without prior notice.
Every possible effort has been made to ensure that the data listed in this catalog is correct.
However, we can not assume responsibility for any errors or omissions.



Value & Technology



This catalog has been printed on paper of 100% waste paper pulp using environmentally friendly soy ink.

CAT.NO.B1001E
Printed in Japan '06.9-1CM('02.9)